

GE Healthcare

New ImageQuant 350

Sensitivity for your digital
images and budget



imagination at work

ImageQuant 350

Sensitivity for your digital images and budget

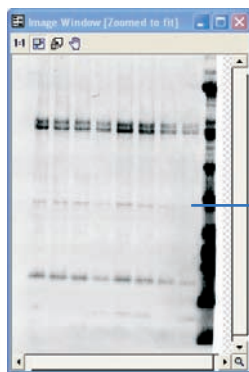
ImageQuant™ 350 brings the many benefits of digital imaging to Western blotting without sacrificing the sensitivity of film. ImageQuant 350 is designed to perform across a wide range of monochromatic imaging applications.

Western blotting goes digital

GE Healthcare presents ImageQuant 350, a high value, cost efficient digital imaging solution designed to meet the demands of imaging Western blots and other monochromatic fluorescence and colorimetric applications of the lab.

The performance you need for Western blotting

ImageQuant 350 has the sensitivity, dynamic range, and linearity to detect and quantitate low, abundant proteins on a Western blot. Since the true 16-bit cooled CCD offers more dynamic range than film, ImageQuant 350 is superb for quantating the detection afforded by Amersham™ ECL™ reagents. The 2 megapixel image size provides high resolution for gels and films up to 21 x 16 cm.

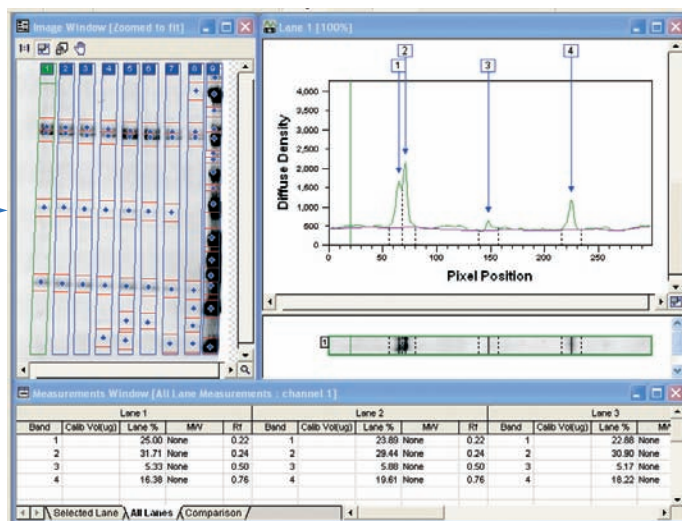


Perfectly digitized images

Fast 5 frames/second view mode gives rapid feedback for optimizing image focus and exposure. Images are rapidly digitized, avoiding the need for multiple exposures and eliminating the potential loss of signal associated with film documentation.

ImageQuant TL analysis

ImageQuant TL software is the recognized leader for gel image acquisition and analysis from the high-end Typhoon™ and Storm™ systems. If you already use Typhoon or Storm, you don't need to learn new software.



Simplifying the process

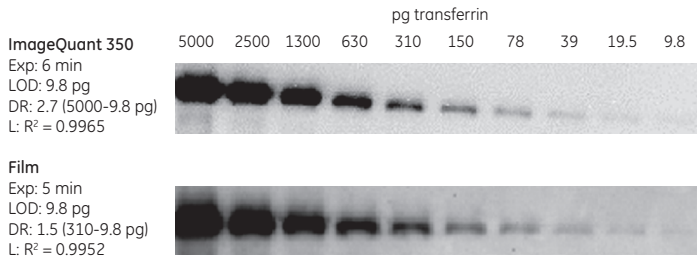
ImageQuant 350 improves more than just your image. It eliminates the cost of multiple exposures and maximizes your time. Add to that the advantage that your blots and gels are stored digitally, ready for analysis, annotation, sharing, and publication and you have an invaluable laboratory imaging platform.

Flexibility and ease of use

Simple to learn and use, ImageQuant 350 can be switched between imaging modes and applications in seconds. Switch the system to image DNA and RNA gels, Western and nucleic acid blots, 1-D and 2-D protein gels, dot blots, and culture dishes.

A Winning Team

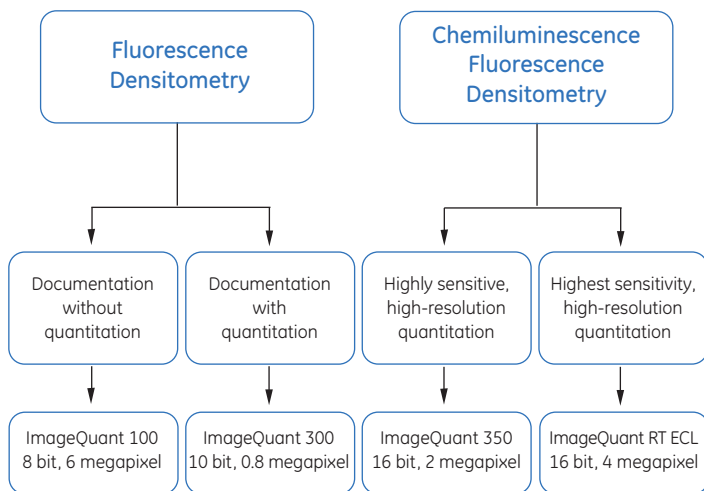
Have you ever lost your protein of interest while doing a Western blot? Was it the membrane, the transfer, the imager or the reagents? Who would you call for help? GE Healthcare provides a single point of expert contact for all stages of your Western blotting and fluorescence imaging application needs. With optimized solutions to improve information quality and cost efficiency in your lab, we call it Life Science Re-Imagined.



Comparison of ImageQuant 350 with film for Amersham ECL Plus chemiluminescent detection in limit of detection (LOD), dynamic range (DR; log values) and linearity (L). An exposure time (Exp) of 6 min for ImageQuant 350 gives comparable limit of detection to that of film exposure for 5 min. ImageQuant 350 shows wider dynamic range and low noise, giving a good basis for quantitation.

The right ImageQuant system to meet your needs

The ImageQuant family of imagers covers the full breadth of price and performance to match your application requirements. Use the Selection Guide below to find your perfect partner.



ImageQuant 350 features a sensitive 2 Mpixel 16-bit cooled CCD camera, offering imaging performance for Western blotting equal to, and in some respects better than, film.

Ordering information

ImageQuant 350

Product Description	Code No.
ImageQuant 350, Standard model (manual fixed f1.8, 28 mm and manual zoom f2.8 28-70 mm)	28-9261-75
ImageQuant 350, with Motorized Fixed Lens (motorized fixed f1.8, 28 mm and manual zoom f2.8, 28-70 mm)	28-9272-95
Filters	
For Ethidium Bromide, Coomassie™ Blue, SYPRO™ Orange, 590/55 nm	28-9272-77
For GFP, SYBR Safe™, SYBR Gold, Fluorescein, SYBR Green, 537/35 nm	28-9272-78
For Hoechst 33258, blue dye or carbohydrate gels, 460/40 nm	63-0056-65
For SYPRO Red, SYPRO Ruby, Texas Red™, Rhodamine, 620/40 nm	63-0056-64
Lenses	
f/2.8 motorized zoom lens 28-70 mm	28-9265-84
f/1.8 motorized fixed lens 28 mm	28-9265-85
f/1.4 motorized fixed lens 50 mm	28-9265-86
f/0.95 manual fixed lens 25 mm	28-9266-06
f/0.95 manual fixed Lens 50 mm	28-9266-05
f/1.4 manual fixed lens 50 mm	63-0057-14
f/1.8 manual fixed lens 28 mm	28-9277-27
Software	
ImageQuant TL, single user license	63-0050-72
ImageQuant TL, 5-user network license	63-0050-74

For the latest technical specifications and ordering information, download Data file 28-9273-67 from www.gelifesciences.com

GE, imagination at work, and GE monogram are trademarks of General Electric Company.

Amersham, ImageQuant, ECL, Storm, and Typhoon are trademarks of GE Healthcare companies.

All third party trademarks are the property of their respective owners.

© 2007 General Electric Company – All rights reserved.
First published Sept. 2007

GE Healthcare UK Limited
Amersham Place
Little Chalfont, Buckinghamshire
HP7 9NA, UK

GE Healthcare Europe GmbH
Munzinger Strasse 5, D-79111 Freiburg
Germany

GE Healthcare Bio-Sciences Corp
800 Centennial Avenue, P.O. Box 1327
Piscataway, NJ 08855-1327
USA

GE Healthcare Bio-Sciences KK
Sanken Bldg. 3-25-1, Hyakunincho
Shinjuku-ku, Tokyo 169-0073
Japan

For contact information for your local office,
please visit: www.gelifesciences.com/contact

GE Healthcare Bio-Sciences AB
Björkgatan 30
751 84 Uppsala
Sweden

www.gelifesciences.com/ImageQuant350

