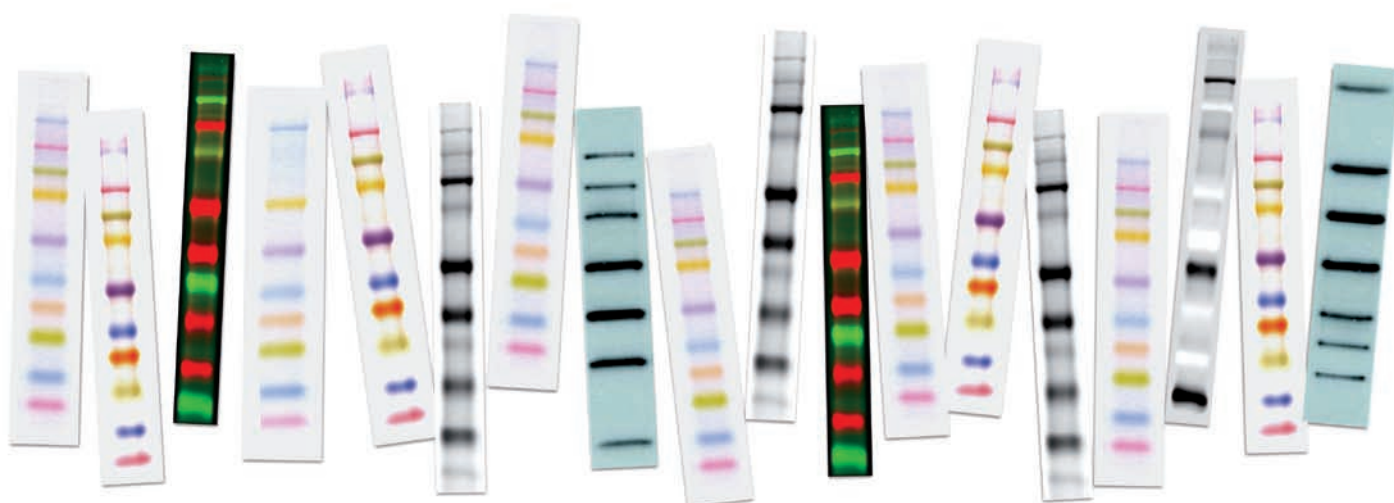


GE Healthcare

# Amersham Rainbow Markers

Accurate size determination of your protein on gels and blots



# Rainbow Markers at a glance

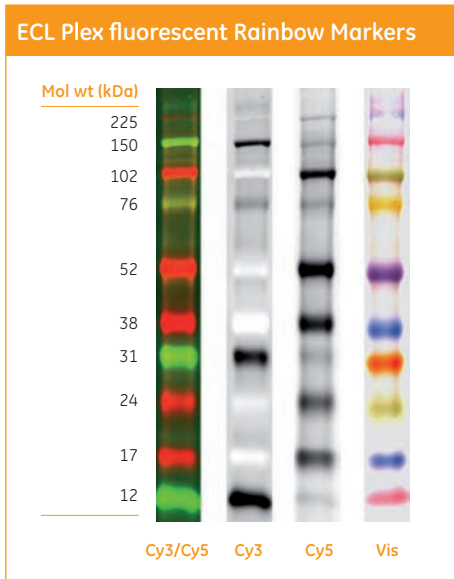
## Simpler and faster identification of your proteins of interest

To differentiate proteins with similar molecular weights on your gels or blots, you need the clearest protein standards to get the fastest results. Rely on the proven performance of Amersham™ Rainbow™ Markers that have been redeveloped for even better results.

- Broad color spectrum for easier band identification
- Sharper, more intense bands on gels and blots
- Improved band spacing for more accurate molecular weight determination
- Ready-to-load formulations
- Individual colored proteins to allow confirmation of transfer to membranes and orientation



# Improved accuracy

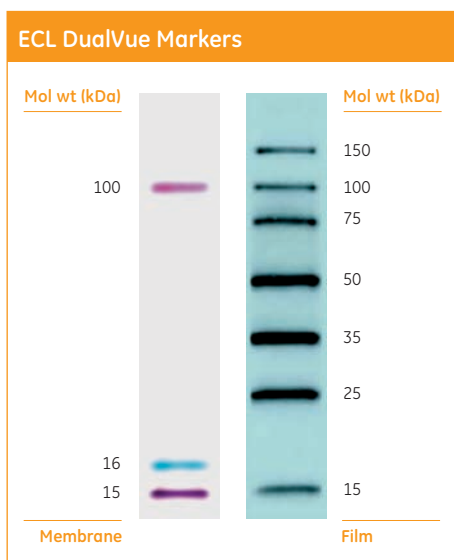


## ECL Plex fluorescent Rainbow Markers for quantitative Western blots

Optimized for use with the ECL Plex system. Amersham ECL Plex is a novel system that enables detection of one or two proteins on a Western blot at the same time.

The system is validated for use on Typhoon™, Storm™ and Ettan™ DIGE Imager, and delivers broad dynamic range with high linearity.

The markers are specially optimized to provide visible marker bands on gels and membranes, as well as fluorescent images using Cy3 and Cy5 channels.



## ECL DualVue Markers

Optimized for use with ECL, ECL Plus and ECL Advance. ECL Western Blotting Systems ensure that you can always select the solution best suited to your application.

### Accuracy

- Prestained markers indicate efficiency of protein transfer to membrane and blot orientation
- Tagged recombinant protein markers allow accurate calculation of molecular weight

### Compatibility

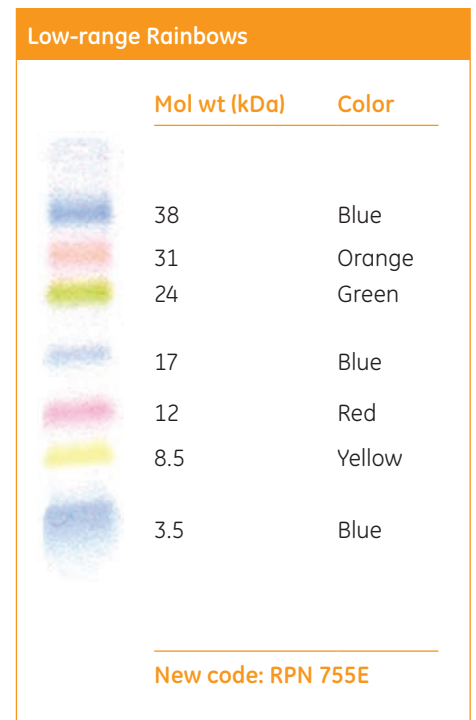
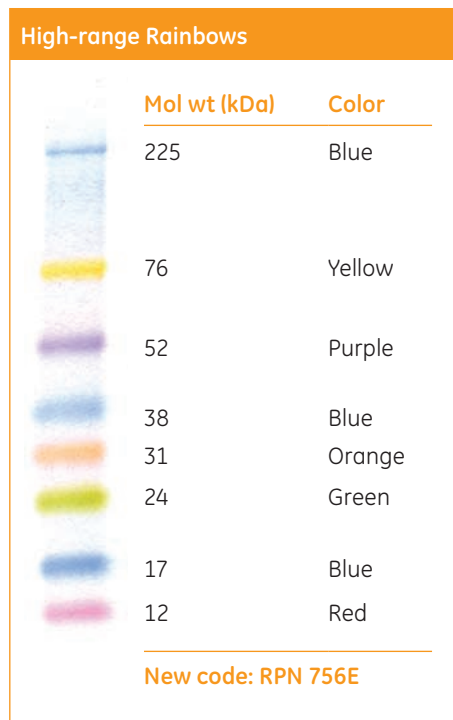
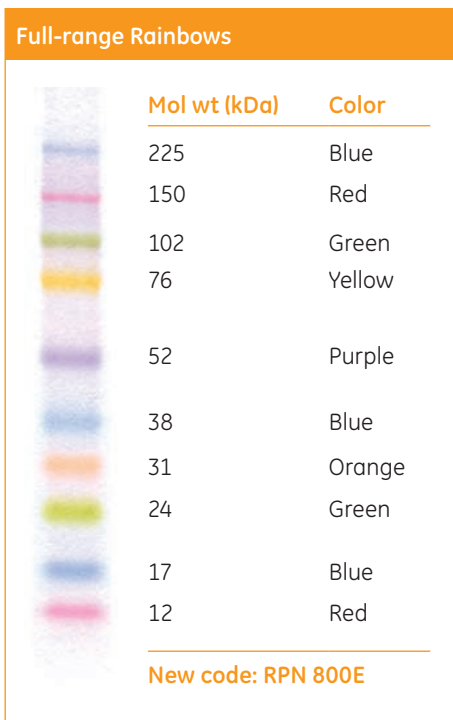
- Product is compatible with any HRP substrate as well as both PVDF and nitrocellulose membrane types
- Can be used with Hyperfilm™ or CCD imaging

### Convenience

- Easy-to-follow protocol – one simple loading on the gel followed by addition of S-protein-HRP to the primary or secondary antibody incubation
- Each pack contains Amersham DualVue markers and S-protein-HRP sufficient for 25 loadings

# Rainbow Markers in detail

- Monitor progress of protein electrophoresis and assess transfer efficiency and molecular weight of blotted proteins without staining
- High intensity, prestained multicolored bands allow distinction of closely related proteins
- Full-range Rainbow Markers ( $M_r$  12 000 to 225 000) use ten separate proteins with six different colors
- High-range Rainbow Markers ( $M_r$  12 000 to 225 000) use eight separate proteins with six different colors
- Low-range Rainbow Markers ( $M_r$  3 500 to 38 000) use seven separate proteins with five different colors
- For use on SDS-PAGE



# Selection Guide

Whatever your gel and Western blotting requirements are, we offer the widest range of protein markers and systems to meet your needs.

Product	Visualization	Code number	Volume	Number of Samples
Rainbow Markers (full-range)	Visible, multicolor	RPN 800E*	250 µl	50
Rainbow Markers (high-range)	Visible, multicolor	RPN 756E*	250 µl	50
Rainbow Markers (low-range)	Visible, multicolor	RPN 755E*	250 µl	50
ECL Plex Markers (full-range)	Fluorescent & visible, multicolor	RPN 850E*	120 µl	50
ECL Plex Markers (full-range)	Fluorescent & visible, multicolor	RPN 851E*	500 µl	200
ECL DualVue Markers (full-range)	Chemiluminescent, visible	RPN 810	215 µl	25

\* The code numbers for improved Rainbow Markers, and ECL Plex markers end with the suffix E.

## Other related markers

Product	Visualization	Code number
ECL molecular weight markers (Full range)	Chemiluminescent	RPN 2107, RPN 2280
<sup>14</sup> C protein molecular weight markers (Multiple ranges)	Radioactive	CFA 626, 645, 755, 756
Protein molecular weight standards (Multiple ranges)	Unlabelled	RPN 5800 80-112-83 17-0446-01 17-0615-01 17-0445-01

## Related products

Amersham ECL™ Western Blotting Systems deliver sensitivity, speed, and versatility. As the world's first chemiluminescent reagents, they have established a well-earned reputation for excellence. ECL, ECL Plus™, and ECL Advance™ are now complemented by the ECL Plex™ fluorescent system, expanding your options even further.

	ECL	ECL Plus	ECL Advance	ECL Plex
<b>Recommended use</b>	Routine Western blotting	Chemiluminescence and chemifluorescence on scanners	Low primary antibody concentration	Quantitative analysis, multiplexing of proteins of the same or different (M <sub>r</sub> )
<b>Sensitivity in model system (pg)</b>	~ 10	~ 5	~ 1	~ 1
<b>Emission duration</b>	1–2 h	24–48 h	4–6 h	> 3 months, protected from light
<b>Recommended detection method</b>	Hyperfilm ECL, CCD	Fluorescence scanner/ Hyperfilm ECL, CCD	Hyperfilm ECL, CCD	Fluorescence scanner and CCD imagers

GE, imagination at work and GE Monogram are trademarks of General Electric Company.

Amersham, ECL, ECL Advance, ECL DualVue, ECL Plex, ECL Plus, Hyperfilm, Storm, Rainbow, and Typhoon are trademarks of GE Healthcare companies.

© 2007 General Electric Company – All rights reserved.  
First published July 2007.

GE Healthcare Bio-Sciences AB,  
Björkgatan 30, 751 84 Uppsala, Sweden

GE Healthcare Europe GmbH  
Munzinger Strasse 5, D-79111 Freiburg, Germany

GE Healthcare Bio-Sciences Corp  
800 Centennial Avenue, P.O. Box 1327, Piscataway,  
NJ 08855-1327, USA

GE Healthcare Bio-Sciences KK  
Sanken Bldg. 3-25-1, Hyakunincho, Shinjuku-ku,  
Tokyo 169-0073, Japan

For contact information for your local office,  
please visit, [www.gelifesciences.com/contact](http://www.gelifesciences.com/contact)

[www.gelifesciences.com](http://www.gelifesciences.com)

GE Healthcare Limited  
Amersham Place  
Little Chalfont, Buckinghamshire  
HP7 9NA, UK



imagination at work